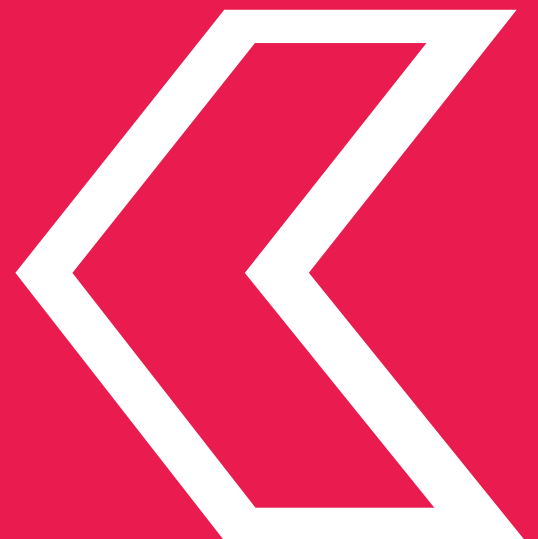
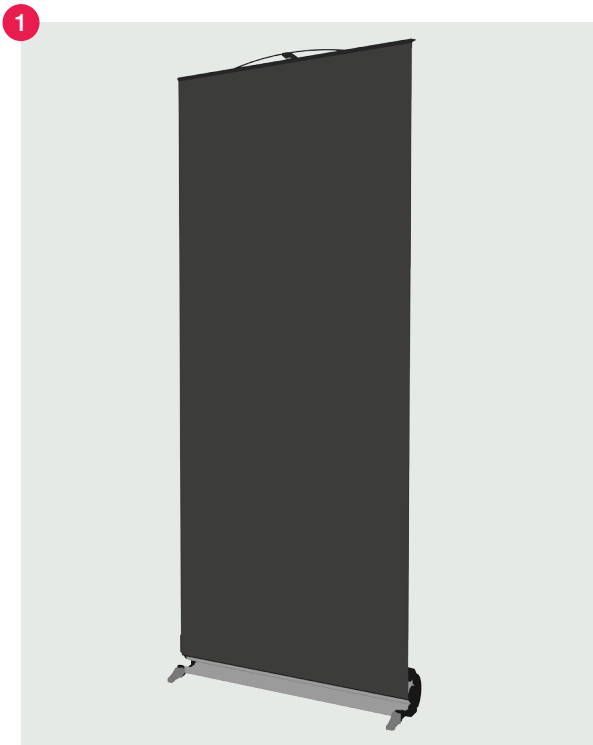


LINK²
ROLLER
BANNER

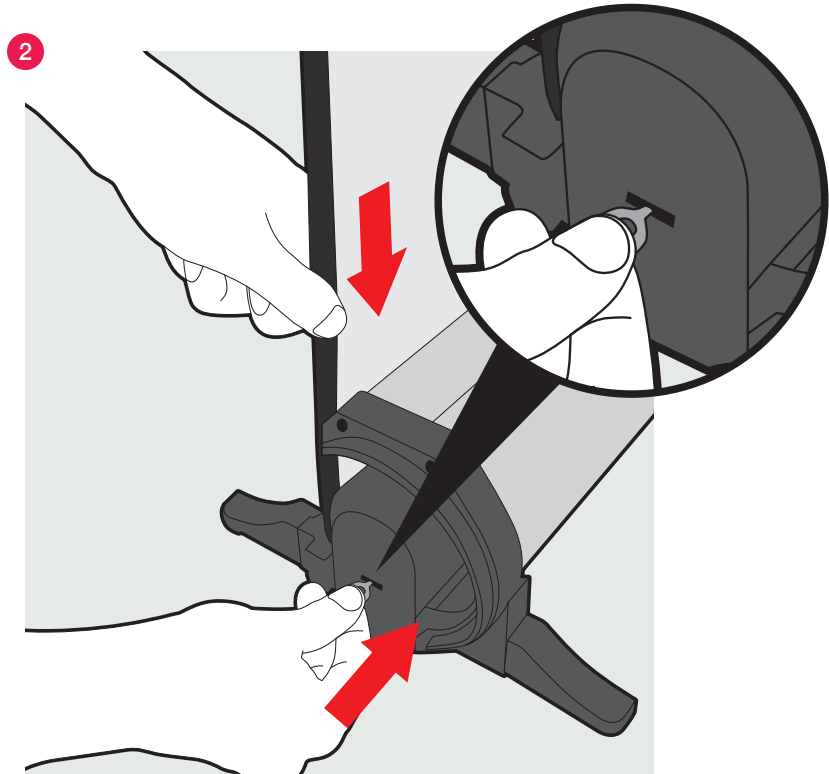
replacement graphic instructions



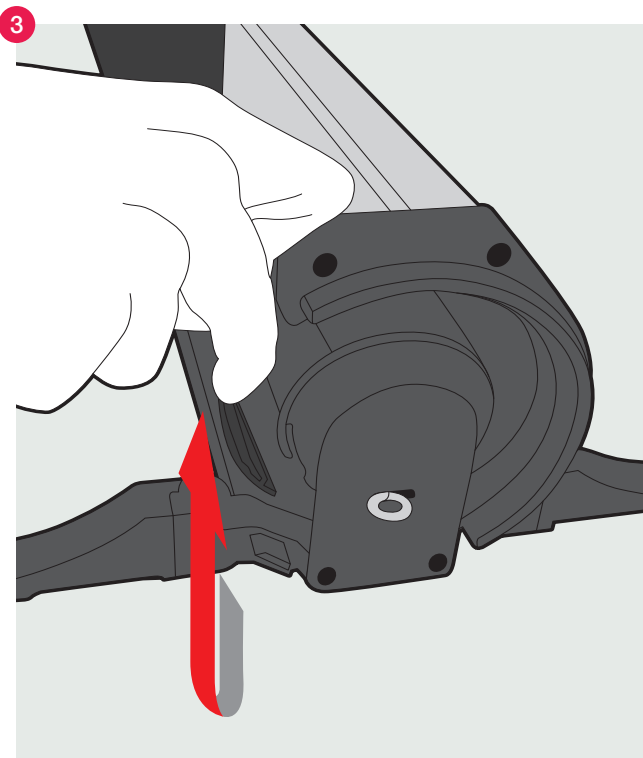
Link² Replacement Graphic Instructions



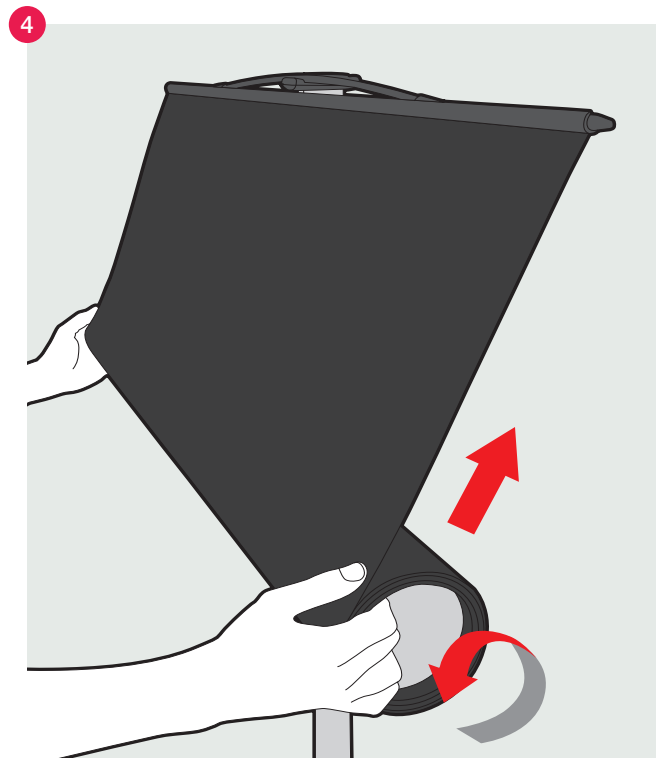
Assemble the Link².



Pull down on the graphic slightly and insert pin.



Unhook graphic from bottom hook.



Roll up graphic panel.

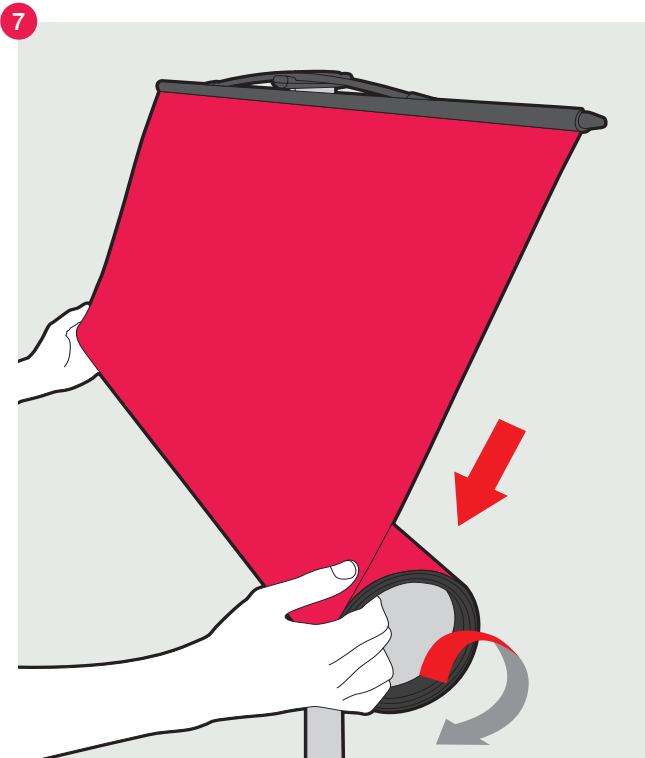
Link² Replacement Graphic Instructions



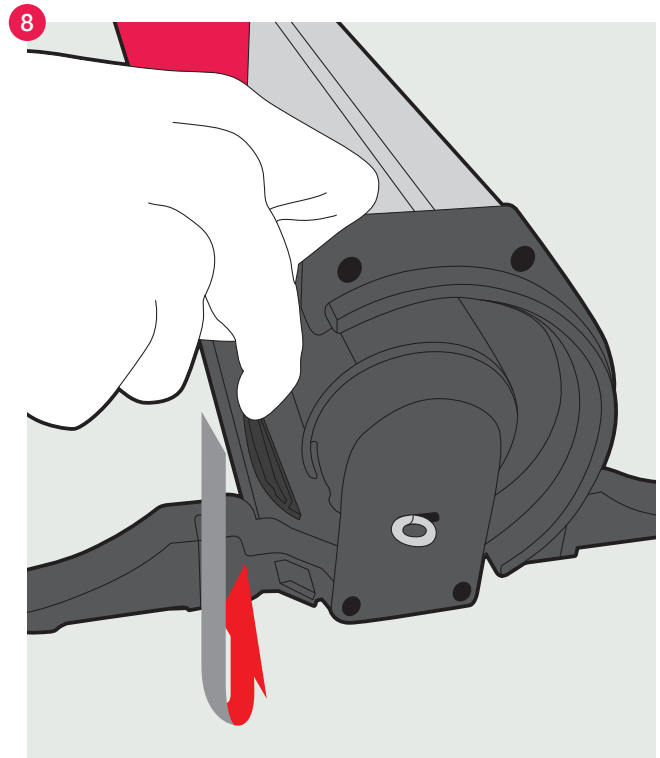
Unhook graphic panel from top bar.



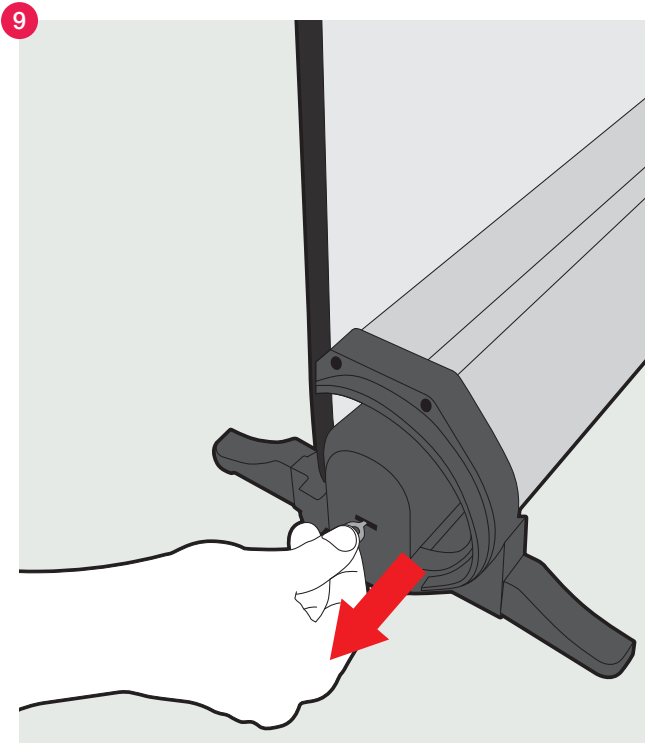
Hook new graphic onto top bar.



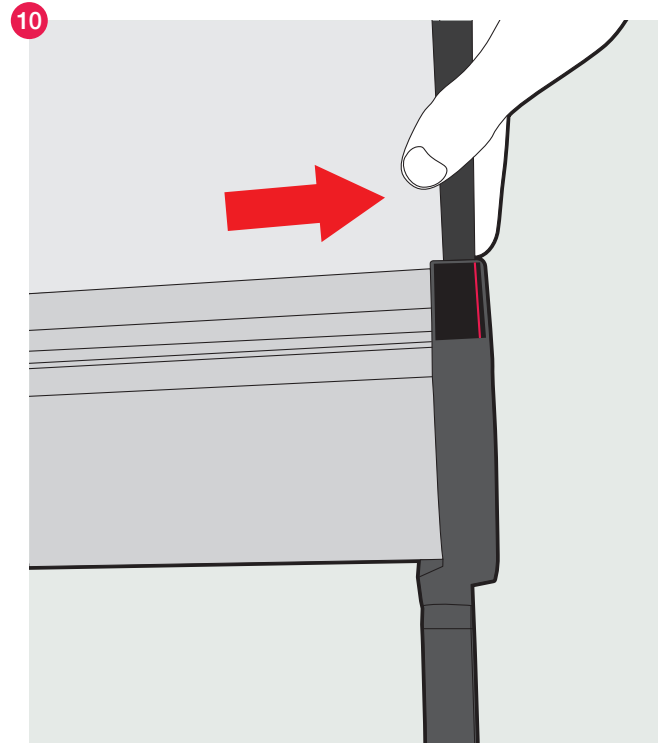
Roll down graphic.



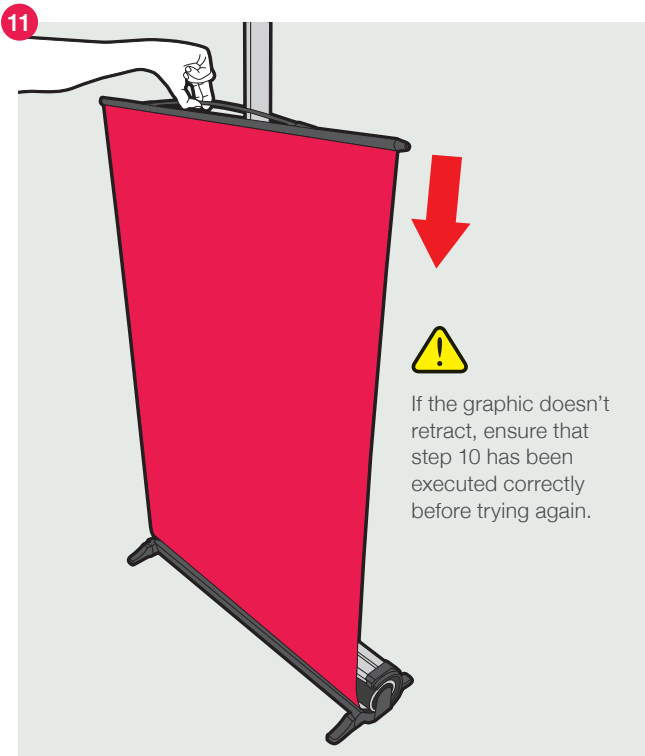
Hook bottom of graphic panel to cassette.



Pull the pin out of the cassette.



Ensure graphic panel is aligned to the red line.



Roll graphic panel into the cassette.



Graphic is retracted into the cassette as normal.